

HOW TO CALCULATE LIVE AREA:

H: _____ (Finish Height)
 - _____ (Pocket Size x2)
 - **4"** (Safety Area x2)

= _____"h

W: _____ (Finish Width)
 - **2"** (1" Per Side)

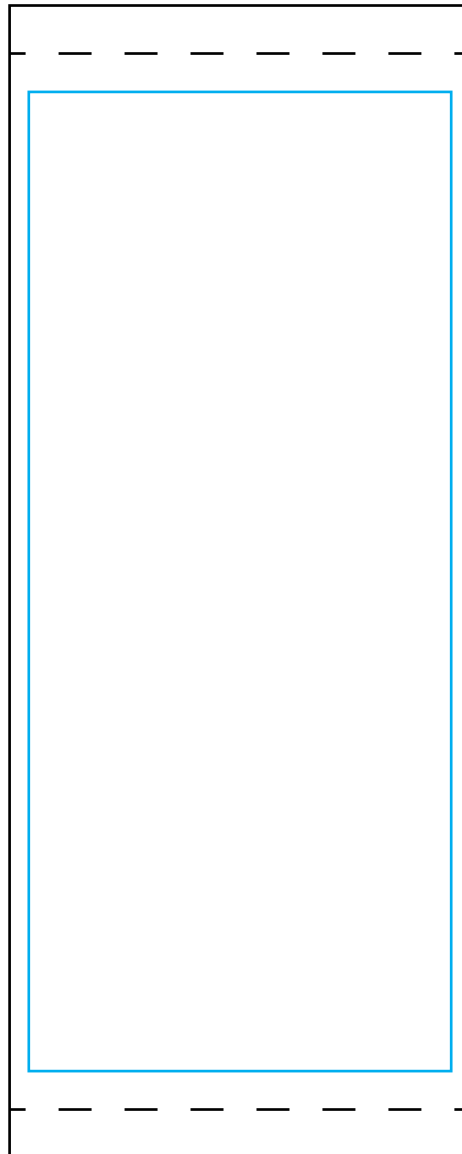
= _____"w

EXAMPLE: 60"h x 24"w Banner with 2.5" Pockets

H: 60"
 - 5" (Pocket Size x2)
 - 4" (Safety Area x2)
= 51"

W: 24"
 - 2" (1" Per Side)
= 22"

LIVE AREA = 51"h x 22"w



] POLE POCKET
] 2" SAFETY AREA

***Safety Area**

Pole Pocket Fabrication on Double-Sided Pole Banners involves part of the artwork folding over and lining up with the other side. **When text, logos, or important elements fall into this area, there is a risk of distortion.**



] 2" SAFETY AREA
] POLE POCKET

FINISH SIZE: _____"h x _____"w
 The size of the finished product after fabrication. Pole Pockets are included in the Finish Size.

LIVE AREA: _____"h x _____"w
 The area of the print that is visible and free from fabrication obstructions. *Keep all text, logos, and other important design elements within this area.

FABRICATION

- D** DOUBLE SIDED
-  GROMMETS
- P** POCKETS

ART REQUIREMENTS

 **CLICK HERE FOR DETAILS:**
bannersaver.com/art-requirements